

# ELEGANCE

**VEG** · Semi-mural plug-in R 290 refrigeration  
elegance series display counters aesthetic



## EXCELLENCE IN THE SHOPPING EXPERIENCE

No canopy product for easy ergonomic access to the product.

Wide range of options, end panels and customization possibilities



## ESTHETIC TYPE COUNTERS WITH A HIGH FRONT TO SET THE SALES AREA WITH THE SUPERMARKET COUNTERS DISPLAY CASES.



## FULL VISIBILITY OF THE DISPLAY PRODUCTS

Low front with display

High efficiency LED lighting



## PLUG IN LOW MULTIDECK R290 PREPARED TO DISPLAY REFRIGERATED PRODUCTS

Eco-friendly version







**InfriCo**



## ELEGANCE SERIES

Semi-mural plug-in R 290 refrigeration elegance series display counters aesthetic VEG



PLUG IN

FOR



### AVAILABLE MODELS

VEG9U

VEG12U

VEG15U

VEG18U

**ELECTRICAL DATA:** 115 V / 1Ph / 60 Hz

**REFRIGERANT CONNECTION:** R-290

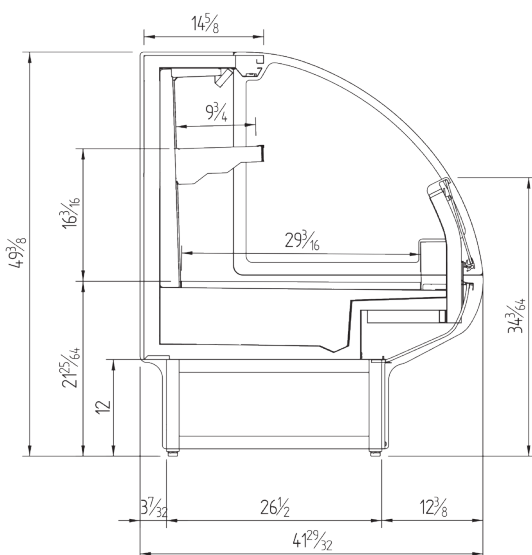
**PRODUCT TEMP:** 33°F / 41°F

### GENERAL DATA

MODEL	VEG9U	VEG12U	VEG15U	VEG18U
LENGTH (in)	37	49 1/5	61 1/2	73 5/6
TOTAL VOLUME (ft³)	11 1/6	15	18 3/4	22 1/2
TDA (ft²)	9	12	15	18

### GENERAL DATA

MEASURE (in)	41 29/32 x 49 3/8 x **L (in)
SHELVES (in)	9 3/4
N° SHELVES	1
EXPOSITION DECK (in)	29 3/16
SIDE PANEL THICKNESS (in)	1 1/6



COMMERCIAL SECTION

### STANDAR FEATURES

#### Exterior:

- Full size double panel glass doors that prevent heat transmission
- Epoxy painted steel sheet
- Double panel glass sides

#### Interior:

- AISI 304 Stainless Steel.
- Stainless Steel internal panel perforated.
- Height and incline adjustable stainless steel shelves

#### Insulation:

- CFC-Free polyurethane insulation, entire cabinet structure is foamed-in place using a high density polyurethane insulation.

#### Electrical and electronic controllers:

- Remote alarm signals.
- Encapsulated and sealed NTC temperature probes.
- Effective way to visualize temperature.

#### Refrigeration:

- Digital temperature controller with automatic defrost system.

