

AMBAR

VBR · Pastry display cases



EXCELLENCE IN THE SHOPPING EXPERIENCE



FLEXIBILITY OF LAYOUT TO COMBINE DIFFERENT TYPES OF SALES WITHIN THE SAME LINE.



TWO DIFFERENT DESIGNS, WITH STRAIGHT AND CURVED GLASS, TO INTEGRATE INTO ALL SALES AREAS.



THE MODULAR RANGE OF PASTRY DISPLAY CASES.



AMBAR SERIES

Pastry display cases

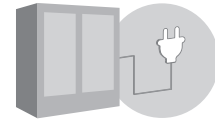
VBR IR



PASTRY



PLUG IN



AVAILABLE MODELS

VBR9IR

VBR12IR

VBR18IR

ELECTRICAL DATA: 115 V / 1Ph / 60 Hz

REFRIGERANT CONNECTION: R-290

PRODUCT TEMP: 39°F / 45°F

GENERAL DATA

| MODEL | VBR9IR | VBR12IR | VBR18IR |
|--------------------|--------|---------|---------|
| LENGTH (in) | 37 | 49 1/5 | 73 5/6 |
| TOTAL VOLUME (ft³) | 9 1/4 | 12 1/3 | 18 1/2 |
| TDA (ft²) | 14 1/2 | 19 1/3 | 29 |

GENERAL DATA

| | |
|---------------------------|--------------------------------|
| MEASURE (in) | 31 17/32 x 50 23/32 x **L (in) |
| SHELVES (in) | 12 13/16 · 15 15/16 · 17 1/2 |
| N° SHELVES | 3 |
| EXPOSITION DECK (in) | 19 5/8 |
| SIDE PANEL THICKNESS (in) | 1 1/6 |

STANDAR FEATURES

Exterior:

- AISI 304 Stainless Steel.
- Glass sided panels.
- Heavy duty ball transfer and levelling feet.

Interior:

- AISI 304 Stainless Steel.
- Stainless Steel internal panel perforated.
- Inclination and height adjustable shelves

Insulation:

- CFC-Free polyurethane insulation, entire cabinet structure is foamed-in place using a high density polyurethane insulation.

Electrical and electronic controllers:

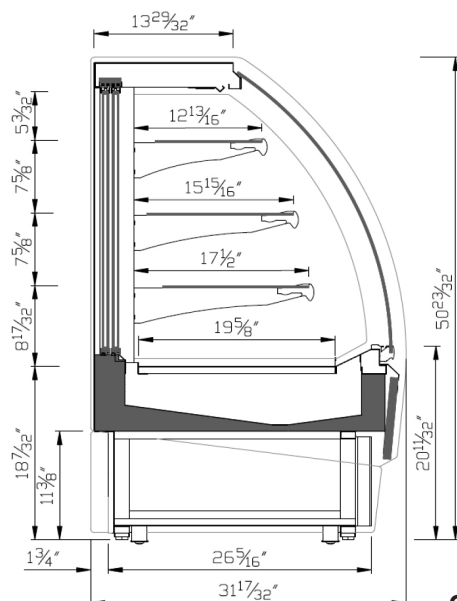
- Remote alarm signals.
- Encapsulated and sealed NTC temperature probes.
- Effective way to visualize temperature.

Refrigeration:

- Digital temperature controller with automatic defrost system.

OPTIONAL EQUIPMENT

- Shelves Lighting
- Evaporation Heaters



COMMERCIAL SECTION

AMBAR SERIES

Pastry display cases

VBR ISS



PLUG IN

PASTRY



AVAILABLE MODELS

VBR9ISS

VBR12ISS

VBR18ISS

ELECTRICAL DATA: 115 V / 1Ph / 60 Hz

REFRIGERANT CONNECTION: R-290

PRODUCT TEMP: 39°F / 45°F

GENERAL DATA

| MODEL | VBR9ISS | VBR12ISS | VBR18ISS |
|--------------------|---------|----------|----------|
| LENGTH (in) | 37 | 49 1/5 | 73 5/6 |
| TOTAL VOLUME (ft³) | 9 1/4 | 12 1/3 | 18 1/2 |
| TDA (ft²) | 9 1/2 | 12 5/8 | 19 |

GENERAL DATA

| | |
|---------------------------|--------------------------------|
| MEASURE (in) | 31 17/32 x 50 23/32 x **L (in) |
| SHELVES (in) | 12 13/16 · 15 15/16 · 17 1/2 |
| N° SHELVES | 3 |
| EXPOSITION DECK (in) | 19 11/16 |
| SIDE PANEL THICKNESS (in) | 1 1/6 |

STANDAR FEATURES

Exterior:

- AISI 304 Stainless Steel.
- Glass sided panels.
- Heavy duty ball transfer and levelling feet.

Interior:

- AISI 304 Stainless Steel.
- Stainless Steel internal panel perforated.
- Inclination and height adjustable shelves

Insulation:

- CFC-Free polyurethane insulation, entire cabinet structure is foamed-in place using a high density polyurethane insulation.

Electrical and electronic controllers:

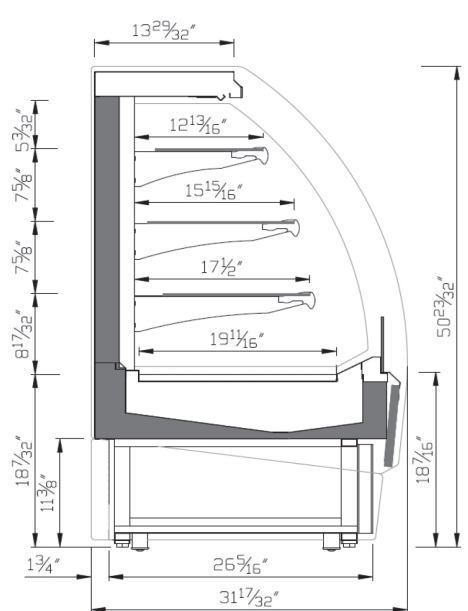
- Remote alarm signals.
- Encapsulated and sealed NTC temperature probes.
- Effective way to visualize temperature.

Refrigeration:

- Digital temperature controller with automatic defrost system.

OPTIONAL EQUIPMENT

- Shelves Lighting
- Evaporation Heaters



COMMERCIAL SECTION

AMBAR SERIES

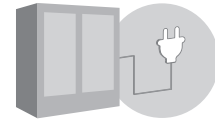
Pastry display cases

VBR IPR



PLUG IN

PASTRY



AVAILABLE MODELS

VBR9IPR

VBR12IPR

VBR18IPR

ELECTRICAL DATA: 115 V / 1Ph / 60 Hz

REFRIGERANT CONNECTION: R-290

PRODUCT TEMP: 39°F / 45°F

GENERAL DATA

| MODEL | VBR9IPR | VBR12IPR | VBR18IPR |
|--------------------|---------|----------|----------|
| LENGTH (in) | 37 | 49 1/5 | 73 5/6 |
| TOTAL VOLUME (ft³) | 9 2/3 | 12 8/9 | 19 1/3 |
| TDA (ft²) | 14 1/2 | 19 1/3 | 29 |

GENERAL DATA

| | |
|---------------------------|-----------------------------|
| MEASURE (in) | 31 3/4 x 51 3/16 x **L (in) |
| SHELVES (in) | 12 15/16 · 16 · 17 5/8 |
| N° SHELVES | 3 |
| EXPOSITION DECK (in) | 19 7/8 |
| SIDE PANEL THICKNESS (in) | 1 1/6 |

STANDAR FEATURES

Exterior:

- AISI 304 Stainless Steel.
- Glass sided panels.
- Heavy duty ball transfer and levelling feet.

Interior:

- AISI 304 Stainless Steel.
- Stainless Steel internal panel perforated.
- Inclination and height adjustable shelves

Insulation:

- CFC-Free polyurethane insulation, entire cabinet structure is foamed-in place using a high density polyurethane insulation.

Electrical and electronic controllers:

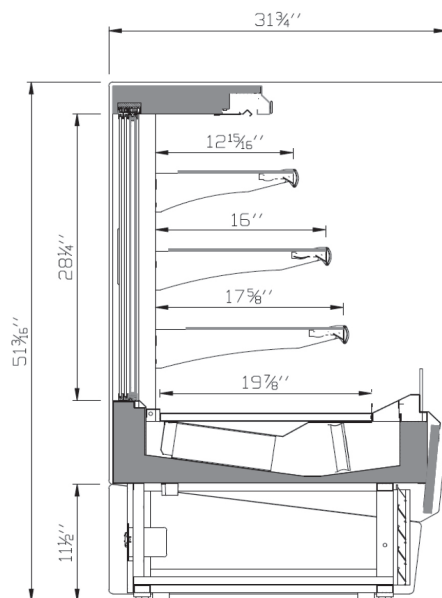
- Remote alarm signals.
- Encapsulated and sealed NTC temperature probes.
- Effective way to visualize temperature.

Refrigeration:

- Digital temperature controller with automatic defrost system.

OPTIONAL EQUIPMENT

- Shelves Lighting
- Evaporation Heaters



COMMERCIAL SECTION

AMBAR INOX SERIES

Pastry display cases

VBR FG



PLUG IN

PASTRY



AVAILABLE MODELS

VBR9FG

VBR12FG

VBR18FG

ELECTRICAL DATA: 115 V / 1Ph / 60 Hz

REFRIGERANT CONNECTION: R-290

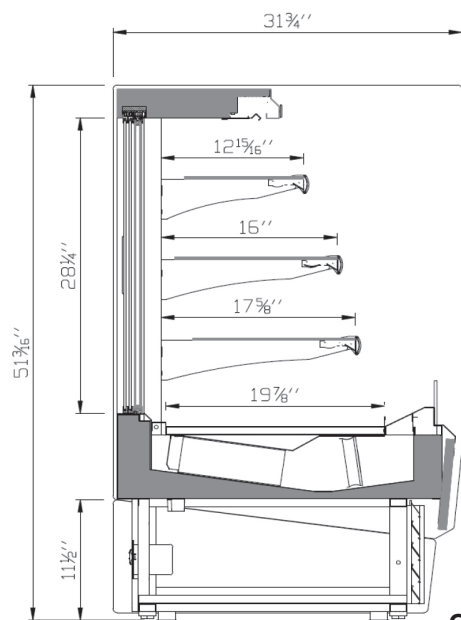
PRODUCT TEMP: 39°F / 45°F

GENERAL DATA

| MODEL | VBR9FG | VBR12FG | VBR18FG |
|--------------------|--------|---------|---------|
| LENGTH (in) | 37 | 49 1/5 | 73 5/6 |
| TOTAL VOLUME (ft³) | 9 2/3 | 12 8/9 | 19 1/3 |
| TDA (ft²) | 14 1/2 | 19 1/3 | 29 |

GENERAL DATA

| | |
|---------------------------|-----------------------------|
| MEASURE (in) | 31 3/4 x 51 3/16 x **L (in) |
| SHELVES (in) | 12 15/16 · 16 · 17 5/8 |
| N° SHELVES | 3 |
| EXPOSITION DECK (in) | 19 7/8 |
| SIDE PANEL THICKNESS (in) | 1 1/6 |



COMMERCIAL SECTION

STANDAR FEATURES

Exterior:

- AISI 304 Stainless Steel.
- Glass sided panels.
- Heavy duty ball transfer and levelling feet.

Interior:

- AISI 304 Stainless Steel.
- Stainless Steel internal panel perforated.
- Inclination and height adjustable shelves

Insulation:

- CFC-Free polyurethane insulation, entire cabinet structure is foamed-in place using a high density polyurethane insulation.

Electrical and electronic controllers:

- Remote alarm signals.
- Encapsulated and sealed NTC temperature probes.
- Effective way to visualize temperature.

Refrigeration:

- Digital temperature controller with automatic defrost system.

OPTIONAL EQUIPMENT

- Shelves Lighting
- Evaporation Heaters

AMBAR SERIES

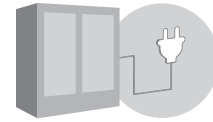
Pastry hot display case

VBR PHT



PLUG IN

HOT - PASTRY



AVAILABLE MODELS

VBR9PHT

VBR12PHT

VBR18PHT

ELECTRICAL DATA: 115 V / 1Ph / 60 Hz

PRODUCT TEMP: 131°F / 140°F

GENERAL DATA

| MODEL | VBR9PHT | VBR12PHT | VBR18PHT |
|----------------------|---------|----------|----------|
| LENGTH (in) | 38 1/2 | 50 4/5 | 75 2/5 |
| USEABLE VOLUME (ft³) | 5 1/2 | 7 2/7 | 11 |
| TDA (ft²) | 14 1/2 | 19 1/3 | 29 |

GENERAL DATA

| | |
|---------------------------|-----------------------------|
| MEASURE (in) | 31 3/4 x 51 3/16 x **L (in) |
| SHELVES (in) | 14 3/4 · 14 3/4 |
| N° SHELVES | 2 |
| EXPOSITION DECK (in) | 19 7/8 |
| SIDE PANEL THICKNESS (in) | — |

STANDAR FEATURES

Exterior:

- Epoxy painted steel sheet
- Glass sided panels
- Adjustable feet

Interior:

- AISI 304 Stainless Steel.
- Stainless Steel internal panel perforated.
- Inclination and height adjustable shelves

Insulation:

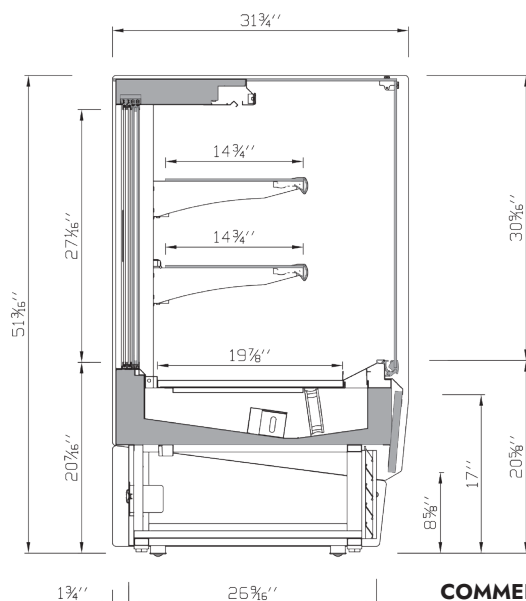
- CFC-Free polyurethane insulation, entire cabinet structure is foamed-in place using a high density polyurethane insulation.

Electrical and electronic controllers:

- Remote alarm signals.
- Encapsulated and sealed NTC temperature probes.
- Effective way to visualize temperature.
- Electrical connections is 115 V/ 1ph/ 60 Hz With Nema 5P20 Plug.

Control:

- Digital temperature controller.
- Forced hot air movement.



COMMERCIAL SECTION

AMBAR SERIES

Food hot display case Grab & Go
VBR PC



WARM HOLDING CASE



AVAILABLE MODELS

VBR9PC VBR12PC

ELECTRICAL DATA: 220 V / 1Ph / 60 Hz

PRODUCT TEMP: 149°F / 158°F

Hot air recirculation and heaters in each shelf to ensure the right temperature of the packaged product regardless of his size or shape.

GENERAL DATA

| MODEL | VBR9PC | VBR12PC |
|----------------------|--------|---------|
| LENGTH (in) | 37 | 49 1/5 |
| USEABLE VOLUME (ft³) | 5 1/2 | 7 2/7 |
| TDA (ft²) | 14 1/2 | 19 1/3 |

GENERAL DATA

| | |
|---------------------------|------------------------------|
| MEASURE (in) | 31 3/4 x 51 23/64 x **L (in) |
| SHELVES (in) | 14 19/64 · 14 19/64 |
| N° SHELVES | 2 |
| EXPOSITION DECK (in) | 19 31/32 |
| SIDE PANEL THICKNESS (in) | — |

STANDAR FEATURES

Exterior:

- Epoxy painted steel sheet
- Glass sided panels
- Adjustable feet

Interior:

- AISI 304 Stainless Steel.
- Stainless Steel internal panel perforated.
- Inclination and height adjustable shelves

Insulation:

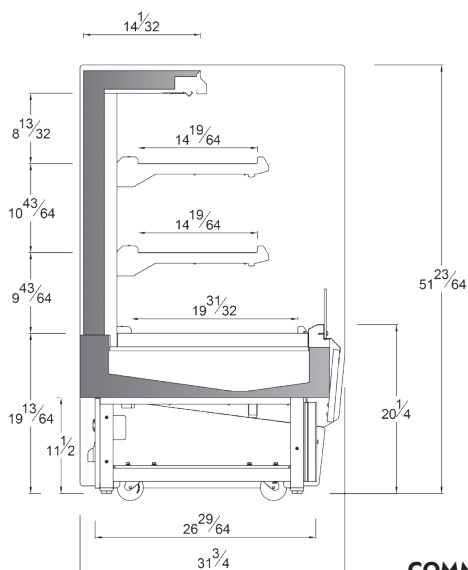
- CFC-Free polyurethane insulation, entire cabinet structure is foamed-in place using a high density polyurethane insulation.

Electrical and electronic controllers:

- Remote alarm signals.
- Encapsulated and sealed NTC temperature probes.
- Effective way to visualize temperature.
- Electrical connections is 220 V/ 1ph/ 60 Hz NEMA 6P20 and 220 V/ 3ph/ 60 Hz NEMA 6P20

Control:

- Digital temperature controller.
- Forced hot air movement.



COMMERCIAL SECTION