

1. Reach-in Refrigerators & Freezers



Top mounted reach -In Refrigerators

Models	Description	Page
IRR-AGB23	1 Solid Door Refrigerator - 23 ft ³	18
IRR-AGB23_2	2 Solid Door Refrigerator - 23 ft ³	18
IRR-AGB49	2 Solid Door Refrigerator - 49 ft ³	18
IRR-AGB49_4	4 Solid Door Refrigerator - 49 ft ³	18
IRR-AGB23BT	1 Solid Door Freezer - 23 ft ³	18
IRR-AGB49BT	2 Solid Door Freezer - 49 ft ³	18
IRR-AGB23CR	1 Glass Door Refrigerator - 23 ft ³	18
IRR-AGB49CR	2 Glass Door Refrigerator - 49 ft ³	18

Roll-In & Roll-thru

Models	Description	Page
IRR-AGB45RI	1 Section Roll-In Refrigerator With 66-1/4" Cart Capacity	19
IRR-AGB96RI	2 Section Roll-In Refrigerator With 66-1/4" Cart Capacity	19
IRR-AGB45RT	1 Section Roll-Thru Refrigerator With 66-1/4" Cart Capacity	19
IRR-AGB45RIBT	1 Section Roll-In Freezer With 66-1/4" Cart Capacity	19



Bottom mounted reach-In, Refrigerators & freezers

Models	Description	Page	Models	Description	Page
IRR-AN23	1 Solid Door Refrigerator - 23 ft ³	20	IRR-AN49MX	2 Solid Door Dual Refrigerator & Freezer - 49 ft ³	20
IRR-AN23_2	2 Solid Door Refrigerator - 23 ft ³	20	IRR-AN23CR	1 Glass Door Refrigerator - 23 ft ³	20
IRR-AN49	2 Solid Door Refrigerator - 49 ft ³	20	IRR-AN49CR	2 Glass Door Refrigerator 49 ft ³	20
IRR-AN49_4	4 Solid Door Refrigerator - 49 ft ³	20	IRR-AN67CR	3 Glass Door Refrigerator -67 ft ³	20
IRR-AN67	3 Solid Door Refrigerator - 67ft ³	20	IRR-AN23BT	1 Glass Door Freezer - 23 ft ³	20
IRR-AN67_6	6 Solid Door Refrigerator - 67ft ³	20	IRR-AN49BT	2 Glass Door Freezer 49 ft ³	20
IRR-AN23BT	1 Solid Door Freezer - 23 ft ³	20			
IRR-AN49BT	2 Solid Door Cr - 49 ft ³	20			
IRR-AN67BT	3 Solid Door Freezer - 67 ft ³	20			



Top mounted Slim Line reach-In, Refrigerators & freezers

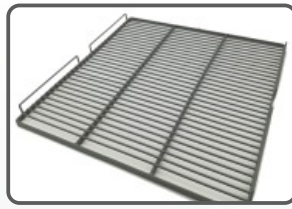
Models	Description	Page	Models	Description	Page
IRR-AGN300CR	1 Glass Door Refrigerator	22	IRR-AGN602	2 Solid Door Refrigerator	22
IRR-AGN301	1 Solid Door Refrigerator	22	IRR-AGN603	3 Solid Door Refrigerator	22
IRR-AGN302	2 Solid Door Refrigerator	22	IRR-AGN604	4 Solid Door Refrigerator	22
IRR-AGN301BT	1 Solid Door Freezer	22	IRR-AGN602BT	2 Solid Door Freezer	22
IRR-AGN600CR	2 Glass Door Refrigerator	22	IRR-AGN602MX	2 Solid Door Dual Refrig. & Freezer	22



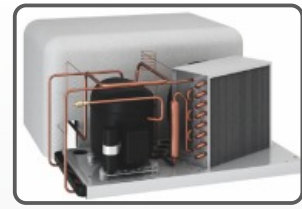
Specifications



Triple chamber snap in door gasket for easy cleaning



Reinforced shelves



Compact monoblock system [AGB models]



AGB23



AN23_2



AN49 CR

Exterior

- AISI 304 stainless steel

Interior

- AISI 430 stainless steel
- Sealed interior floors and rounded cabinet corners
- Led lighting
- Internal drain plug for easy cleaning.

Shelving

- Three plastic coated wire shelves per door with stainless steel tray slides included.
- Tray slides are compatible with 18"x26" and 12"x20" sheet pans,
- Plastic coated tray divider [except IRR-AGB23, IRR-AGB23-2 and IRR-AN23].

Doors

- Polyurethane insulated doors,
- Self closing doors with stay open feature
- Stainless Steel heavy-duty hinges
- Triple chamber snap in door gaskets for easy removal and cleaning,
- Field reversible doors,
- Doors locks,
- Full-height door opening [22-7/8" x 58-5/8"].



Interior features of IRR-AGB23BT



Expansion valve AGB models and AN model freezers



AN67



AGB45 RI

Refrigeration

- Forced air refrigeration system, expansive valve
- Digital temperature controller with automatic defrost system
- Energy-saving non-electric condensate pan
- Evaporator coil coated with anticorrosion material 100% Polyester -100 °F ambient
- Electronic fans
- Hot gas defrost for low temp units

Roll-in & roll-thru

Exterior

- Insulated bottom side with 0,8" [1 inch] thick with ramp included
- Built with removable panel for easy installation

Interior

- AISI 304 stainless steel
- Panel thickness 3-3/16"

Refrigeration

- Compact refrigeration system monoblock, INFRIBLOCK ®

Bottom mounted Reach-in Refrigerators & Freezers

AN Series



MOD.	Overall Dimensions			Doors	Shelves	[°F]	[ft ³]	[HP]	115V	220V	[Lbs]	DOE
IRR-AN23	27	31-3/8	83-1/2	1	3	33°F/38°F	23.0	1/4	3,8		430	Hydrocarbon R-290
IRR-AN23_2	27	31-3/8	83-1/2	2	3	33°F/38°F	23.0	1/4	3,8		430	Hydrocarbon R-290
IRR-AN49	54-1/2	31-3/8	83-1/2	2	6	33°F/38°F	49.0	1/3	4,0		600	Hydrocarbon R-290
IRR-AN49_4	54-1/2	31-3/8	83-1/2	4	6	33°F/38°F	49.0	1/3	4,0		600	Hydrocarbon R-290
IRR-AN67	82	31-3/8	83-1/2	3	9	33°F/38°F	67.0	1/2	6,1		900	Hydrocarbon R-290
IRR-AN67_6	82	31-3/8	83-1/2	6	9	33°F/38°F	67.0	1/2	6,1		900	Hydrocarbon R-290
IRR-AN23BT	27	31-3/8	83-1/2	1	3	-5°F/0°F	23.0	3/4	6.1		430	Hydrocarbon R-290
IRR-AN49BT	54-1/2	31-3/8	83-1/2	2	6	-5°F/0°F	49.0	1 -1/4	8.7	2	610	Hydrocarbon R-290
IRR-AN67BT	82	31-3/8	83-1/2	3	9	-5°F/0°F	67.0	3/4+3/4	10.6	4	900	Hydrocarbon R-290
IRR-AN49MX DUAL TEMP. +/-	54-1/2	31-3/8	83-1/2	2	6	33°F/38°F -5°F/0°F	23.0 23.0	1/4 3/4	10.5	-	700	Hydrocarbon R-290
IRR-AN23CR	27	31-3/8	83-1/2	1	4	33°F/38°F	23.0	1/3	3.8		430	Hydrocarbon R-290
IRR-AN49CR	54-1/2	31-3/8	83-1/2	2	8	33°F/38°F	49.0	1/3	4.9		600	Hydrocarbon R-290
IRR-AN67CR	82	31-3/8	83-1/2	3	12	33°F/38°F	67.0	1/2	6.2		723	Hydrocarbon R-290
IRR-AN23BTCR	27	31-3/8	83-1/2	1	4	33°F/38°F	23.0	1/3	3.8		430	Hydrocarbon R-290
IRR-AN49BTCR	54-1/2	31-3/8	83-1/2	2	8	33°F/38°F	49.0	1/3	4.9		600	Hydrocarbon R-290

Height already includes 5-1/8" for casters

Bottom mounted Reach-in Refrigerators & Freezers

AN Series

IRR-AN49CR



Tray sliders are compatible with 18" x 26" and 12" x 20" sheet pans



RGB LED lighting (option)

Reinforced wire shelves

Sealed interior floors and rounded cabinet corners

IRR-AN67_6



STANDARD FEATURES

<p>ELECTRICAL</p>	<p>Cord and NEMA 5-15P plug, electrical connection is 115V / 1ph / 60Hz Cord and NEMA 5-15P plug, [AGB 23BT] Forced air refrigeration and Capillary system Each compartment has its own refrigeration system [MX] Expansion valve [all] and hot gas defrost system [BT]</p>	<p>NEMA 5-15P AN23 BT AN49BT NEMA 5-20P AN67 BT AN49MX Built-in double Thermopane glass door [CR]</p>
<p>DOE DOORS</p>	<p>BT Models: Heated door frame to avoid accumulation of ice Door built-in Thermopane double glass [CR models]</p>	
<p>AMBIENT</p>	<p>Temp 100°F</p>	
<p>OPTIONS Section 10 [Accessories & parts]</p>	<p>Stainless Steel wire shelves Stainless Steel tray divider</p>	<p>Additional slide kits Set of 6" legs, height adjustable from 5" to 8"</p>