

# 8. Counter top display cases





## Refrigerated Ingredient cases

Models	Description	Page
ICT-VIP1330B1/3GLASSTOP	Pizza ingredient displays - 4 pans - Glass	84
ICT-VIP1490B1/3GLASSTOP	Pizza ingredient displays - 5 pans - Glass	84
ICT-VIP1740B1/3GLASSTOP	Pizza ingredient displays - 6 pans - Glass	84
ICT-VIP1980B1/3GLASSTOP	Pizza ingredient displays - 8 pans - Glass	84
ICT-VIP2300B1/3GLASSTOP	Pizza ingredient displays - 10 pans - Glass	84
ICT-VIP1330B1/3SOLIDLID	Pizza ingredient displays - 4 pans - Solid Lid	84
ICT-VIP1490B1/3SOLIDLID	Pizza ingredient displays - 5 pans - Solid Lid	84
ICT-VIP1740B1/3SOLIDLID	Pizza ingredient displays - 6 pans - Solid Lid	84
ICT-VIP1980B1/3SOLIDLID	Pizza ingredient displays - 8 pans - Solid Lid	84
ICT-VIP2300B1/3SOLIDLID	Pizza ingredient displays - 10 pans - Solid Lid	84

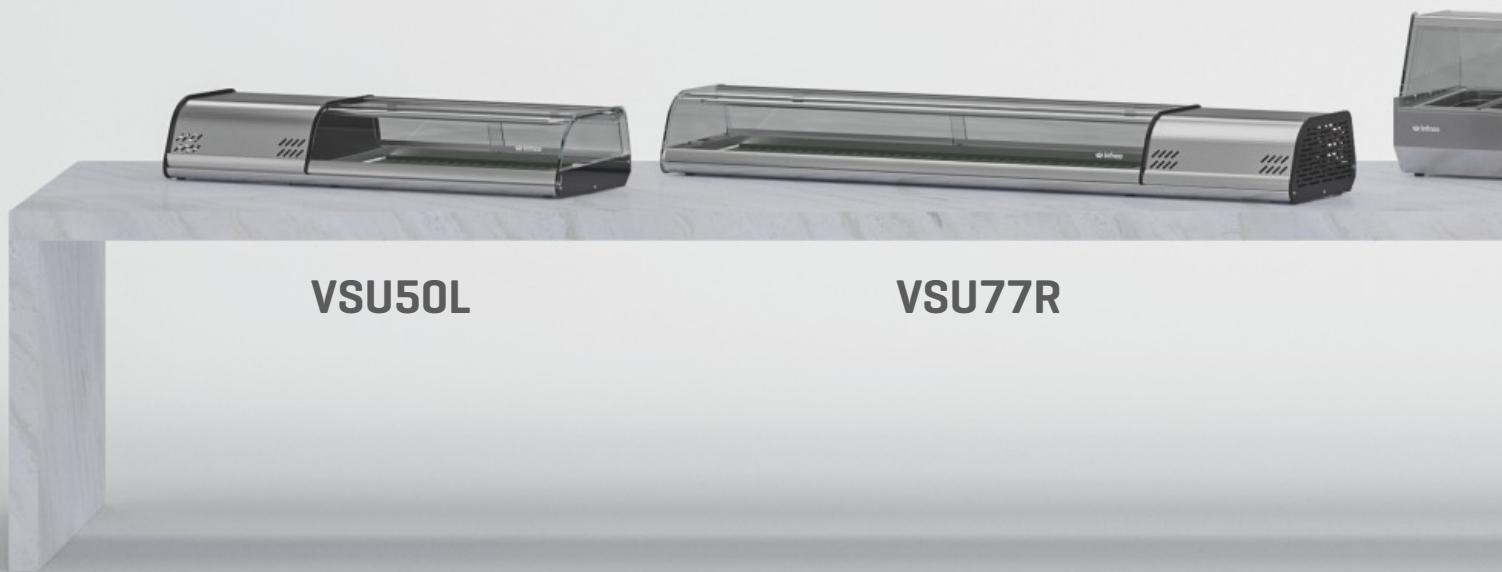


## Sushi cases

Models	Description	Page
ICT-VSU50L	Left side condensing unit - Width 50"	85
ICT-VSU63L	Left side condensing unit - Width 63-3/4"	85
ICT-VSU77L	Left side condensing unit - Width 77-5/8"	85
ICT-VSU50R	Right side condensing unit - Width 50"	85
ICT-VSU63R	Right side condensing unit - Width 63-3/4"	85
ICT-VSU77R	Right side condensing unit - Width 77-5/8"	85



# Specifications



**VSU50L**

**VSU77R**

## Counter top ingredient cases

### Exterior

- Aisi 304 stainless steel
- Safety glass on the top, closed in the front [facing the customer] and open in the back facing the operator]
- Sliding doors on the back
- Levelling feet

### Interior

- Aisi 304 stainless steel
- Stainless steel 6" deep pans, included

### Insulation

- Cfc-free polyurethane insulation, entire cabinet structure is foamed-in place using a high density polyurethane insulation - Low gwp & zero odp effect

### Refrigeration

- Digital temperature controller with automatic defrost system
- Cold wall refrigeration system
- Refrigerant gas R600A

### Electrical

- Cord and nema 5-15p plug
- Electrical connection is 115v / 1ph / 60hz



**VIP1740B 1/3  
Glasstop**

**VIP1980B 1/3  
Solid Lid**

**Counter top sushi display cases**

**Exterior**

- Aisi 304 stainless steel
- Rear sliding doors, included
- Anodized aluminum silver profile
- Levelling feet

**Interior**

- Aisi 304 stainless steel
- Internal drain plug for easy cleaning
- Led lighting in top profile

**Insulation**

- Cfc-free polyurethane insulation, entire cabinet structure is foamed-in place using a high density polyurethane insulation - Low gwp & zero odp effect

**Refrigeration**

- Digital temperature controller
- Manual defrost system
- Gravity coil on top and cold plate refrigeration system on the bottom
- Refrigerant gas R134A

**Electrical**

- Cord and nema 5-15p plug
- Electrical connection is 115v / 1ph / 60hz

# VIP Series

Countertop refrigerated display cases

VIP Series

ICT-VIP1490B1/3GLASSTOP



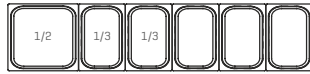
ICT-VIP1980B1/3SOLIDLID



VIP 1330 B 1/3  
(501X13) = 1 (501X11) = 3



VIP 1740 B 1/3  
(501X13) = 1 (501X11) = 5



VIP 1490 B 1/3  
(501X13) = 1 (501X11) = 4



VIP 1980 B 1/3  
(501X11) = 8

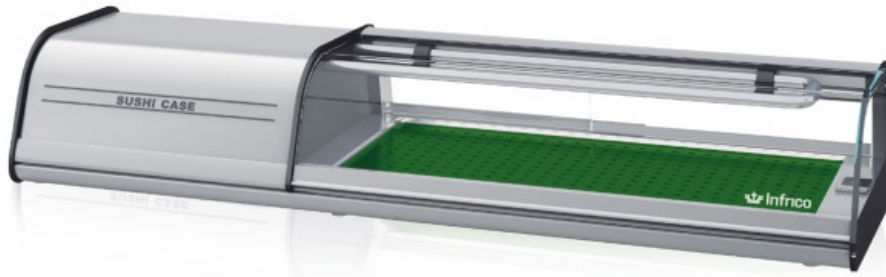


MOD.	Overall Dimensions			Pans	[°F]	[ft³]	[HP]	[Amps]	[Lbs]	DOE
ICT-VIP1330B1/3GLASSTOP	52-5/16	16-5/16	17-11/16	4	39°F/41°F	1.30	1/6	1.82	142	Hydrocarbon R-290
ICT-VIP1490B1/3GLASSTOP	58-3/4	16-5/16	17-11/16	5	39°F/41°F	1.55	1/6	1.82	160	Hydrocarbon R-290
ICT-VIP1704B1/3GLASSTOP	68-1/4	16-5/16	17-11/16	6	39°F/41°F	1.83	1/6	1.82	165	Hydrocarbon R-290
ICT-VIP1980B1/3GLASSTOP	77-13/16	16-5/16	17-11/16	8	39°F/41°F	2.36	1/6	1.82	190	Hydrocarbon R-290
ICT-VIP2300B1/3GLASSTOP	90-1/2	16-1/4	17-3/4	10	39°F/41°F	2.86	1/6	1.82	174	Hydrocarbon R-290
ICT-VIP1330B1/3SOLIDLID	52-5/16	16-5/16	10-1/4	4	39°F/41°F	1.30	1/6	1.82	115	Hydrocarbon R-290
ICT-VIP1490B1/3SOLIDLID	58-3/4	16-5/16	10-1/4	5	39°F/41°F	1.55	1/6	1.82	131	Hydrocarbon R-290
ICT-VIP1740B1/3SOLIDLID	68-1/4	16-5/16	10-1/4	6	39°F/41°F	1.83	1/6	1.82	140	Hydrocarbon R-290
ICT-VIP1980B1/3SOLIDLID	77-13/16	16-5/16	10-1/4	8	39°F/41°F	2.36	1/6	1.82	160	Hydrocarbon R-290
ICT-VIP2300B1/3SOLIDLID	90-1/2	16-1/4	10-1/4	10	39°F/41°F	2.86	1/6	1.82	174	Hydrocarbon R-290

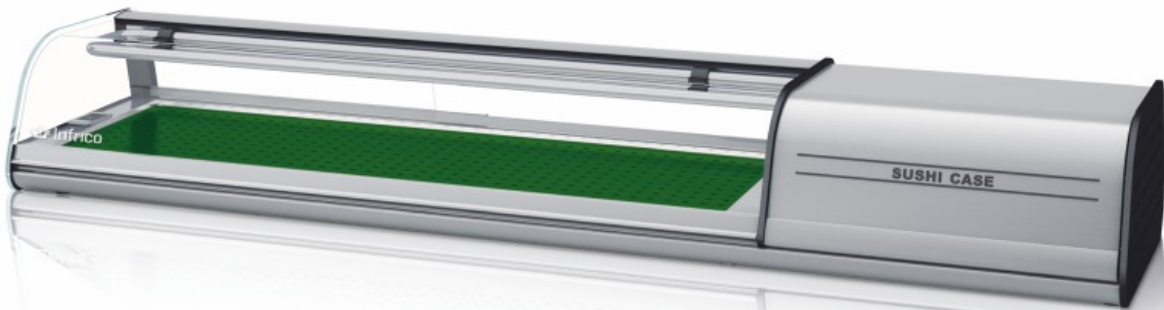
# Countertop Sushi cases

# VSU Series

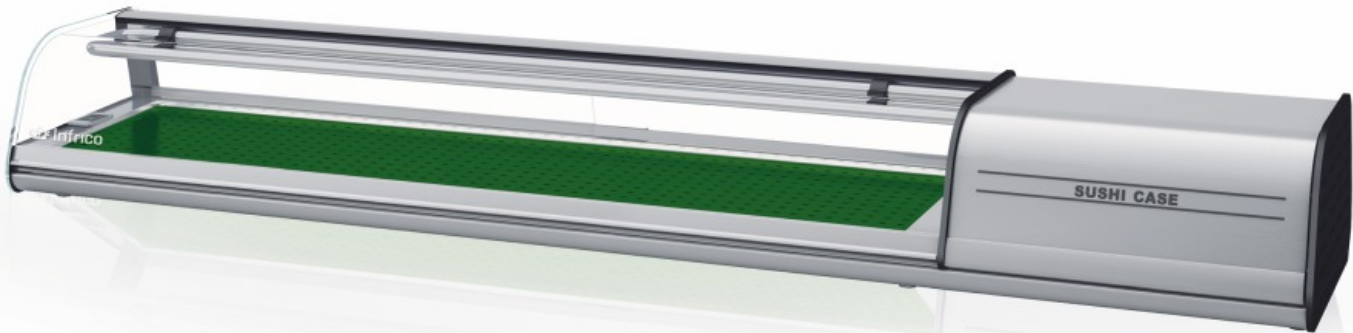
ICT-VSU50L












ICT-VSU63R



ICT-VSU77R



MOD.									
	Overall Dimensions			[°F]	[ft <sup>3</sup> ]	[HP]	115V	[Lbs]	DOE
ICT-VSU50L	50-1/4	16-1/8	9-1/8	30°F/34°F	0.56	1/8	3.2	115	Hydrocarbon R-290
ICT-VSU63L	64-1/16	16-1/8	9-1/8	30°F/34°F	0.84	1/8	3.4	139	Hydrocarbon R-290
ICT-VSU77L	77-15/16	16-1/8	9-1/8	30°F/34°F	1.14	1/8	3.8	180	Hydrocarbon R-290
ICT-VSU50R	50-1/4	16-1/8	9-1/8	30°F/34°F	0.56	1/8	3.2	115	Hydrocarbon R-290
ICT-VSU63R	64-1/16	16-1/8	9-1/8	30°F/34°F	0.84	1/8	3.4	139	Hydrocarbon R-290
ICT-VSU77R	77-15/16	16-1/8	9-1/8	30°F/34°F	1.14	1/8	3.8	180	Hydrocarbon R-290

**Important:** ONLY place refrigerated product! For daily cleaning, remove product and disconnect unit.