

4. Prep tables





Sandwich / Salad prep tables

| Models | Description | Page |
|------------------|--|------|
| IRT-UC27P | 1 Solid Door Refrigerator - 8 pans - 8 ft ³ | 48 |
| IRT-UC36P | 2 Solid Door Refrigerator - 12 pans - 11 ft ³ | 48 |
| IRT-UC48P | 2 Solid Door Refrigerator - 12 pans - 14 ft ³ | 48 |
| IRT-UC60P | 2 Solid Door Refrigerator - 16 pans - 17 ft ³ | 48 |
| IRT-UC72P | 3 Solid Door Refrigerator - 18 pans - 21 ft ³ | 48 |



Pizza Prep tables

| Models | Description | Page |
|--------------------|---|------|
| IRT-MR41EN | 1 Solid Door Refrigerator - 7.8 ft ³ | 50 |
| IRT-MR67EN | 2 Solid Door Refrigerator - 17 ft ³ | 50 |
| IRT-MR93EN | 3 Solid Door Refrigerator - 27 ft ³ | 50 |
| IRT-MR119EN | 4 Solid Door Refrigerator - 39 ft ³ | 50 |



Sandwich / Salad prep tables - Megatop

| Models | Description | Page |
|--------------------|--|------|
| IRT-UC27PMT | 1 Solid Door Refrigerator - 12 pans - Megatop - 8 ft ³ | 48 |
| IRT-UC36PMT | 2 Solid Door Refrigerator - 18 pans - Megatop - 11 ft ³ | 48 |
| IRT-UC48PMT | 2 Solid Door Refrigerator - 18 pans - Megatop - 14 ft ³ | 48 |
| IRT-UC60PMT | 2 Solid Door Refrigerator - 24 pans - Megatop - 17 ft ³ | 48 |
| IRT-UC72PMT | 3 Solid Door Refrigerator - 27 pans - Megatop - 21 ft ³ | 48 |



Granite top pizza prep tables

| Models | Description | Page |
|--------------------------|--|------|
| IUC-MR93-GT COMBO | 2 Solid Door Refrigerator - 17 ft ³ | 50 |
| IUC-MR67-GT COMBO | 2 Solid Door Refrigerator - 17 ft ³ | 50 |
| IRT-MPG1490 COMBO | 3 Solid Door Refrigerator - 27 ft ³ | 50 |
| IRT-MPG1980 COMBO | 3 Solid Door Refrigerator - 27 ft ³ | 50 |



Specifications

Sandwich salad prep tables & Megatop

Exterior

- AISI 430 stainless steel
- AISI 304 stainless steel top

Insulation

- CFC-Free polyurethane insulation, entire cabinet structure is foamed-in place using a high density polyurethane insulation
- Low GWP & Zero ODP effect

Doors

- Polyurethane insulated doors
- Self closing doors with stay open feature
- Stainless Steel heavy-duty hinges
- Triple chamber snap in door gaskets for easy removal and cleaning
- Field reversible doors
- Door opening WxH: 23-1/4"x21-7/8" (UC27P); 19-5/8"x21-7/8" (UC48P/UC72P); 25-5/8"x21-7/8" (UC60P)
- Door opening WxH: 23-1/4"x21-7/8" (UC27PMT); 19-5/8"x21-7/8" (UC48PMT/UC72PMT); 25-5/8"x21-7/8" (UC60PMT)

Interior

- AISI 430 stainless steel

Shelving

- [2] Two plastic coated wire shelves per section.

Refrigeration

- Temperature regulated by thermostatic control
- Energy-saving non-electric condensate pan
- Evaporator coil coated with anti-corrosion material 100% Polyester
- Forced air refrigeration system
- Front-breathing refrigeration system
- Refrigerant gas R290



UC27P



UC48PMT



MR41 EN

Pizza prep tables

Exterior

- AISI 430 stainless steel
- AISI 304 stainless steel top
- Sealed interior floors and rounded cabinet corners

Insulation

- CFC-Free polyurethane insulation, entire cabinet structure is foamed-in place using a high density polyurethane insulation
- Low GWP & Zero ODP effect

Doors

- Polyurethane insulated doors
- Self closing doors with stay open feature
- Stainless Steel heavy-duty hinges
- Triple chamber snap in door gaskets for easy removal and cleaning
- Field reversible doors
- Doors locks
- Door opening WxH: 21-5/8" x 20-5/8"

Interior

- AISI 430 stainless steel
- Internal drain plug for easy cleaning.

Shelving

- [2] Two plastic coated wire shelves per section with stainless steel tray slides included
- Compatible with 12"x20" and 18"x26" pans

Refrigeration

- Digital temperature controller with automatic defrost system
- Energy-saving non-electric condensate pan
- Extractable condensing unit for easy service
- Evaporator coil coated with anti-corrosion material 100% Polyester
- Forced air refrigeration system
- Refrigerant gas R290



Triple chamber snap in door gasket for easy cleaning



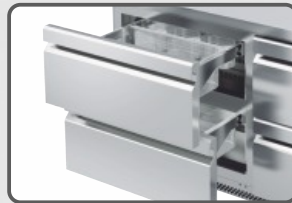
Rounded corners & sealed interior floor, NSF7, including drain plug for cleaning



Extractable side mounted condensing unit for easy service



Protected digital Controller, with automatic Defrost



Each guide supports 132 lb



Cutting board 9-1/2" depth



MR119 EN

MR93GT COMBO

Granite top pizza prep tables

Exterior

- AISI 430 stainless steel
- AISI 304 stainless steel top

Insulation

- CFC-Free polyurethane insulation, entire cabinet structure is foamed-in place using a high density polyurethane insulation
- Low GWP & Zero ODP effect

Doors

- Polyurethane insulated doors
- Self closing doors with stay open feature
- Stainless Steel heavy-duty hinges
- Triple chamber snap in door gaskets for easy removal and cleaning
- Field reversible doors
- Doors locks

Interior

- AISI 430 stainless steel
- Internal drain plug for easy cleaning.
- Sealed interior floors and rounded cabinet corners

Shelving

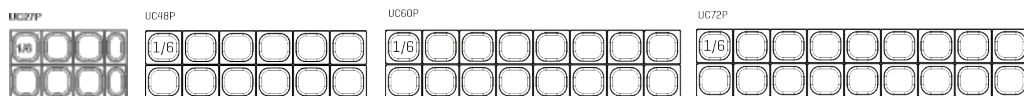
- [1] One plastic coated wire shelves per door with stainless steel tray slides included
- Compatible with 12"x20" pans

Refrigeration

- Digital temperature controller with automatic defrost system
- Extractable condensing unit for easy service
- Evaporator coil coated with anti-corrosion material 100% Polyester
- Drain pan with condensate heater
- Front-breathing refrigeration system
- Refrigeration system independent for table and counter-top ingredient
- Refrigerant gas R290

Sandwich/Salad prep tables

UC P Series



| MOD. | Overall Dimensions | | | Doors | [°F] | [ft ³] | [HP] | 115V [Amps] | [Lbs] | DOE |
|-------------|--------------------|--------|--------|-------|-----------|--------------------|------|----------------|-------|-------------------|
| IRT-UC27P | 27-3/4 | 30-1/8 | 46-1/4 | 1 | 35°F/41°F | 8.0 | 1/4 | 3.9 | 300 | Hydrocarbon R-290 |
| IRT-UC36P | 36-1/2 | 30-1/8 | 46-1/4 | 2 | 35°F/41°F | 14.0 | 1/4 | 4.1 | 350 | Hydrocarbon R-290 |
| IRT-UC48P | 48-1/2 | 30-1/8 | 46-1/4 | 2 | 35°F/41°F | 14.0 | 1/4 | 4.1 | 400 | Hydrocarbon R-290 |
| IRT-UC60P | 60-1/2 | 30-1/8 | 46-1/4 | 2 | 35°F/41°F | 17.0 | 1/4 | 4.1 | 430 | Hydrocarbon R-290 |
| IRT-UC72P | 72-5/8 | 30-1/8 | 46-1/4 | 3 | 35°F/41°F | 21.0 | 1/3 | 4.6 | 506 | Hydrocarbon R-290 |
| IRT-UC27PMT | 27-3/4 | 34-1/8 | 49 | 1 | 35°F/41°F | 8.0 | 1/4 | 3.9 | 310 | Hydrocarbon R-290 |
| IRT-UC36PMT | 36-1/8 | 34-1/8 | 49 | 2 | 35°F/41°F | 14.0 | 1/4 | 4.1 | 360 | Hydrocarbon R-290 |
| IRT-UC48PMT | 48-1/8 | 34-1/8 | 49 | 2 | 35°F/41°F | 14.0 | 1/4 | 4.1 | 410 | Hydrocarbon R-290 |
| IRT-UC60PMT | 60-3/8 | 34-1/8 | 49 | 2 | 35°F/41°F | 17.0 | 1/4 | 4.1 | 500 | Hydrocarbon R-290 |
| IRT-UC72PMT | 72-5/8 | 34-1/8 | 49 | 3 | 35°F/41°F | 21.0 | 1/3 | 4.6 | 530 | Hydrocarbon R-290 |

Height already includes 5-1/8" for casters

Sandwich/Salad prep tables MegaTop

UC PMT Series



Insulated lid

IRT-UC27PMT



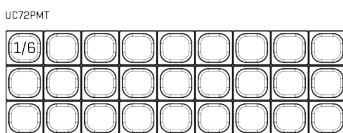
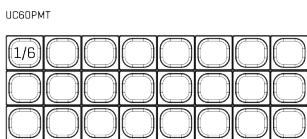
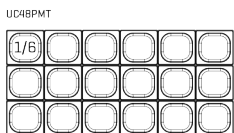
IRT-UC72PMT

Insulated top lid

Cutting board 11-5/8" depth

10-1/2"

35-3/4"



STANDARD FEATURES

| | | |
|--------------------------|---|--|
| <p>ELECTRICAL</p> | <p>Cord and NEMA 5-15P plug</p> | <p>Electrical connection is 115V / 1ph / 60Hz</p> |
| <p>OPTIONS</p> | <p>Drawer kit Flat lid Single overshelf</p> | <p>Double overshelf Set of 2" casters (locking on the front set)</p> |

MR Series

Pizza prep tables
Granite Top Pizza prep tables

MR EN Series
MR GT Series



| MOD. | Overall Dimensions | | | Doors | [°F] | [ft ³] | [HP] | 115V | [Lbs] | DOE |
|-------------------|--------------------|--------|-------------------|-------|------------------------|--------------------|------|------|-------|-------------------|
| IRT-MR41EN | 41-3/8 | 32-5/8 | 43-5/64 | 1/1 | 35°F/41°F | 7.8 | 1/4 | 4.1 | 370 | Hydrocarbon R-290 |
| IRT-MR67EN | 67-3/8 | 32-5/8 | 43-5/64 | 2/2 | 35°F/41°F | 17.0 | 1/3 | 4.6 | 580 | Hydrocarbon R-290 |
| IRT-MR93EN | 93-1/4 | 32-5/8 | 43-5/64 | 3/2 | 35°F/41°F | 27 | 3/4 | 7.7 | 690 | Hydrocarbon R-290 |
| IRT-MR119EN | 119-1/4 | 32-5/8 | 43-5/64 | 4/3 | 35°F/41°F | 39.0 | 3/4 | 7.7 | 800 | Hydrocarbon R-290 |
| IRT-MR93-GT COMBO | 93-1/4 | 32-5/8 | 62-1/8 | 3 | 35°F/41°F | 27.0 | 1/2 | 6.2 | 1260 | Hydrocarbon R-290 |
| IRT-MR67-GT COMBO | 67-3/8 | 32-5/8 | 62-1/8 | 2 | 35°F/41°F | 17.0 | 3/8 | 7.1 | 950 | Hydrocarbon R-290 |
| IRT-MPG1490 COMBO | 58-5/8 | 27-1/2 | 42-7/8 60-1/10 | 2 | 33°F/38°F 39°F/41°F | 10.4 | 1/4 | 6.1 | 520 | Hydrocarbon R-290 |
| IRT-MPG1980 COMBO | 78 | 27-1/2 | 42-7/8 60-1/10 | 3 | 33°F/38°F 39°F/41°F | 2.36 | 1/6 | 1.82 | 190 | Hydrocarbon R-290 |

Height already includes 5-1/8" for casters

MPG Series

Infrico Food Service Equipment '24

Granite Top Pizza prep tables

MPG Series

IUC-MR67GT COMBO



IRT-MPG1980 COMBO



4 PREP TABLES

STANDARD FEATURES

| | | |
|--------------------------|---|--|
| <p>ELECTRICAL</p> | <p>Cord and NEMA 5-15P plug. Electrical connection is 115V / 1ph / 60Hz.</p> | |
| <p>OPTIONS</p> | <p>MR-EN Stainless steel wire shelves Additional slide kits Drawer kit Single Overshelf Double Overshelf</p> | <p>MR-GT / MPG Stainless steel wire shelves Additional slide kits</p> |