

1. Reach-in Refrigerators & Freezers



Top mounted reach -In Refrigerators

Models	Description	Page
IRR-AGB23	1 Solid Door Refrigerator - 23 ft ³	18
IRR-AGB23_2	2 Solid Door Refrigerator - 23 ft ³	18
IRR-AGB49	2 Solid Door Refrigerator - 49 ft ³	18
IRR-AGB49_4	4 Solid Door Refrigerator - 49 ft ³	18
IRR-AGB23BT	1 Solid Door Freezer - 23 ft ³	18
IRR-AGB49BT	2 Solid Door Freezer - 49 ft ³	18
IRR-AGB23CR	1 Glass Door Refrigerator - 23 ft ³	18
IRR-AGB49CR	2 Glass Door Refrigerator - 49 ft ³	18

Roll-In & Roll-thru

Models	Description	Page
IRR-AGB45RI	1 Section Roll-In Refrigerator With 66-1/4" Cart Capacity	19
IRR-AGB96RI	2 Section Roll-In Refrigerator With 66-1/4" Cart Capacity	19
IRR-AGB45RT	1 Section Roll-Thru Refrigerator With 66-1/4" Cart Capacity	19
IRR-AGB45RIBT	1 Section Roll-In Freezer With 66-1/4" Cart Capacity	19



Bottom mounted reach-In, Refrigerators & freezers

Models	Description	Page	Models	Description	Page
IRR-AN23	1 Solid Door Refrigerator - 23 ft ³	20	IRR-AN49MX	2 Solid Door Dual Refrigerator & Freezer - 49 ft ³	20
IRR-AN23_2	2 Solid Door Refrigerator - 23 ft ³	20	IRR-AN23CR	1 Glass Door Refrigerator - 23 ft ³	20
IRR-AN49	2 Solid Door Refrigerator - 49 ft ³	20	IRR-AN49CR	2 Glass Door Refrigerator 49 ft ³	20
IRR-AN49_4	4 Solid Door Refrigerator - 49 ft ³	20	IRR-AN67CR	3 Glass Door Refrigerator -67 ft ³	20
IRR-AN67	3 Solid Door Refrigerator - 67ft ³	20	IRR-AN23BT	1 Glass Door Freezer - 23 ft ³	20
IRR-AN67_6	6 Solid Door Refrigerator - 67ft ³	20	IRR-AN49BT	2 Glass Door Freezer 49 ft ³	20
IRR-AN23BT	1 Solid Door Freezer - 23 ft ³	20			
IRR-AN49BT	2 Solid Door Cr - 49 ft ³	20			
IRR-AN67BT	3 Solid Door Freezer - 67 ft ³	20			



Top mounted Slim Line reach-In, Refrigerators & freezers

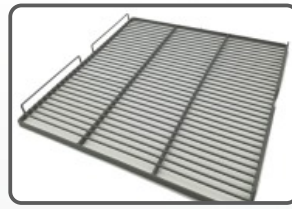
Models	Description	Page	Models	Description	Page
IRR-AGN300CR	1 Glass Door Refrigerator	22	IRR-AGN602	2 Solid Door Refrigerator	22
IRR-AGN301	1 Solid Door Refrigerator	22	IRR-AGN603	3 Solid Door Refrigerator	22
IRR-AGN302	2 Solid Door Refrigerator	22	IRR-AGN604	4 Solid Door Refrigerator	22
IRR-AGN301BT	1 Solid Door Freezer	22	IRR-AGN602BT	2 Solid Door Freezer	22
IRR-AGN600CR	2 Glass Door Refrigerator	22	IRR-AGN602MX	2 Solid Door Dual Refrig. & Freezer	22



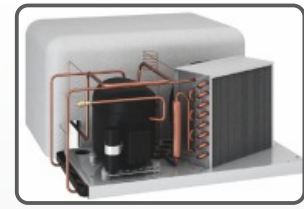
Specifications



Triple chamber snap in door gasket for easy cleaning



Reinforced shelves



Compact monoblock system [AGB models]



AGB23



AN23_2



AN49 CR

Exterior

- AISI 304 stainless steel

Interior

- AISI 430 stainless steel
- Sealed interior floors and rounded cabinet corners
- Led lighting
- Internal drain plug for easy cleaning.

Shelving

- Three plastic coated wire shelves per door with stainless steel tray slides included.
- Tray slides are compatible with 18"x26" and 12"x20" sheet pans,
- Plastic coated tray divider [except IRR-AGB23, IRR-AGB23-2 and IRR-AN23].

Doors

- Polyurethane insulated doors,
- Self closing doors with stay open feature
- Stainless Steel heavy-duty hinges
- Triple chamber snap in door gaskets for easy removal and cleaning,
- Field reversible doors,
- Doors locks,
- Full-height door opening [22-7/8" x 58-5/8"].



Interior features of IRR-AGB23BT



Expansion valve AGB models and AN model freezers



AN67



AGB45 RI

Refrigeration

- Forced air refrigeration system, expansive valve
- Digital temperature controller with automatic defrost system
- Energy-saving non-electric condensate pan
- Evaporator coil coated with anticorrosion material 100% Polyester -100 °F ambient
- Electronic fans
- Hot gas defrost for low temp units

Roll-in & roll-thru

Exterior

- Insulated bottom side with 0,8" [1 inch] thick with ramp included
- Built with removable panel for easy instalation

Interior

- AISI 304 stainless steel
- Panel thickness 3-3/16"

Refrigeration

- Compact refrigeration system monoblock, INFRIBLOCK ®

Roll-in & Roll Thru Refrigerators & Freezers

RI Series



Rack not included

MOD.	Overall Dimensions			Doors	Temp [°F]	Volume [ft³]	Power [HP]	115V [Amps]	Weight [Lbs]	DOE
IRR-AGB45RI	37-1/4	41-3/4	93	1	33°F/38°F	45.24	1/2	6	510	Hydrocarbon R-290
IRR-AGB96RI	71-5/8	41-3/4	93	2	33°F/38°F	96.3	5/8	12.3	970	Hydrocarbon R-290
IRR-AGB45RT	37-1/4	41-3/4	93	2	33°F/38°F	45.24	1/2	6	510	Hydrocarbon R-290
IRR-AGB45RIBT	37-1/4	41-3/4	93	1	-5°F/0°F	45.24	5/8	14	510	Hydrocarbon R-290

Height already includes 5-1/8" for casters

STANDARD FEATURES

ELECTRICAL	For Refrigerators: Cord and NEMA 5-15P plug For Freezers: Cord and NEMA 5-20P plug. / Cord and NEMA L14-30P plug. (AGB 96RIBT) Electrical connection is 115V / 1ph / 60Hz
MAX RACK SIZE	→ 27-1/4 ↗ 36-1/4 ↑ 71-1/2
EXTERIOR	AISI 304 stainless steel Built with removable panels for easy installation Insulated lower side with 0,8" [1 inch] thick with ramp included Insulated floor with 2,5" [2 inch] thick with ramp included