

VALENCIA

VVL · Self-service promotional display counter

MALAGA

VML · Refrigerated display counter for fish



EXCELLENCE IN THE SHOPPING EXPERIENCE



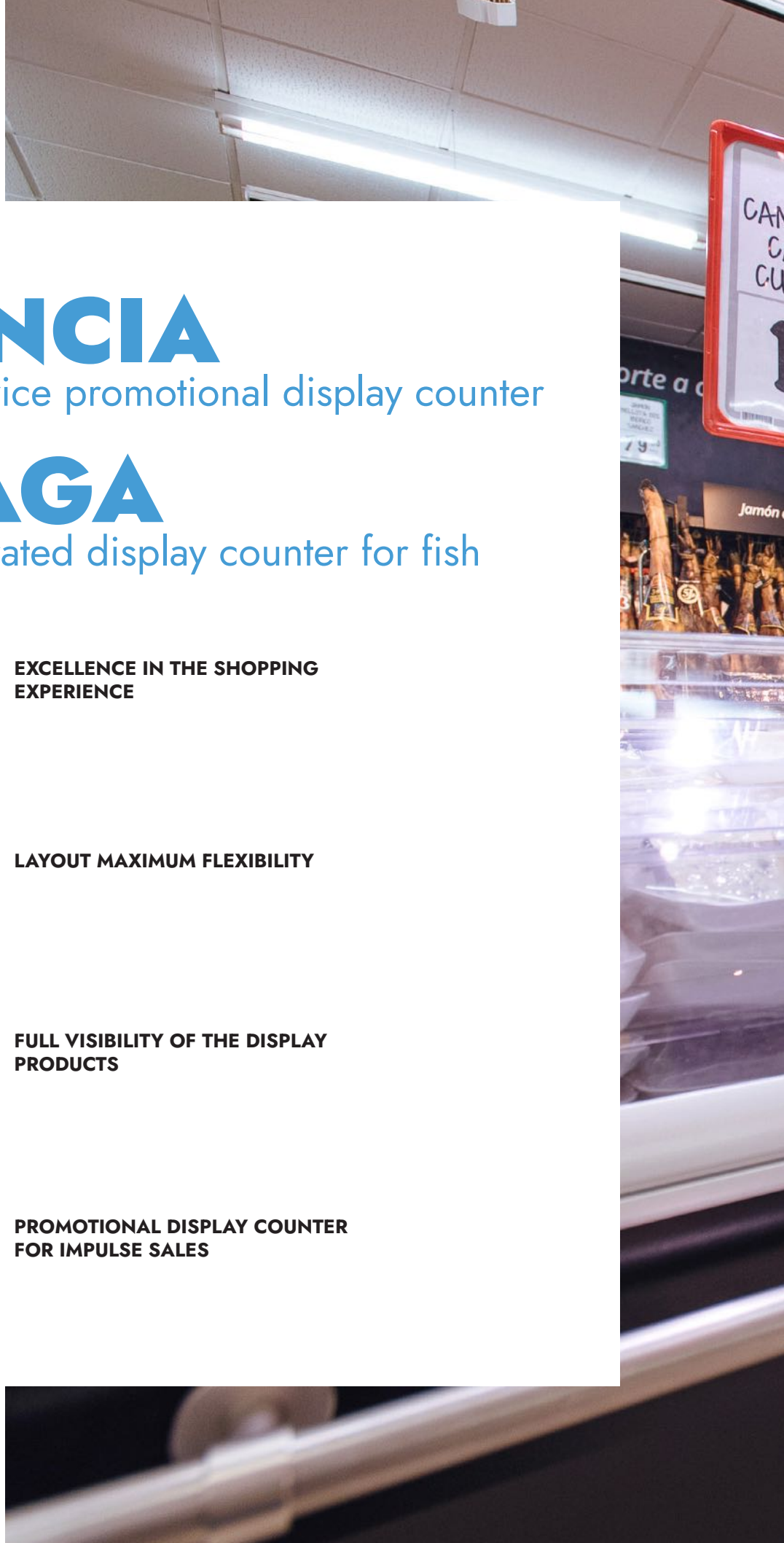
LAYOUT MAXIMUM FLEXIBILITY



FULL VISIBILITY OF THE DISPLAY PRODUCTS



PROMOTIONAL DISPLAY COUNTER FOR IMPULSE SALES





MAS
Queso MIMBERT ANTOREL TAPA 200GR
10.95 €/Kg
IVA incluido

MAS
Queso CURADO BOFFARD ARTESANO TAPA 100GR
1.75 €/Udad
IVA incluido

Más de 45 años seleccionando uno a uno, en origen, los mejores jamones.

Descubre los secretos del jamón

Bellota ibérico 100%

- Crianza: libertad
- Alimentación: bellotas
- Pureza de raza: 100% ibérica
- Curación: más de 36 meses

Bellota ibérico

- Crianza: libertad
- Alimentación: bellotas
- Pureza de raza: 75% ibérica
- Curación: más de 30 meses

Cebo de campo ibérico

- Crianza: libertad
- Alimentación: cereales, legumbres y otros
- Pureza de raza: 75% ibérica
- Curación: más de 24 meses

Cebo ibérico

listo para llevar

VALENCIA SERIES

Self-service promotional display counter
VVL



PLUG IN

FOR



AVAILABLE MODELS

VVL10

VVL12

ELECTRICAL DATA: 115 V / 1Ph / 60 Hz

REFRIGERANT CONNECTION: R-290

PRODUCT TEMP: 33°F / 41°F

GENERAL DATA

MODEL	VVL10	VVL12
LENGTH (in)	37	49 1/5
TOTAL VOLUME (ft³)	4 2/5	6 2/9
TDA (ft²)	9 1/6	12 1/4

GENERAL DATA

MEASURE (in)	45 15/32 x 35 5/16 x **L (in)
SHELVES (in)	—
N° SHELVES	—
EXPOSITION DECK (in)	32 7/8
SIDE PANEL THICKNESS (in)	—

STANDAR FEATURES

Exterior:

- AISI 304 stainless steel exterior.
- Glass sided panels.
- Enamelled steel base.

Interior:

- AISI 304 stainless steel interior
- Stainless Steel perforated removable panels
- Enameled steel bench. Internal drain for cleaning.

Insulation:

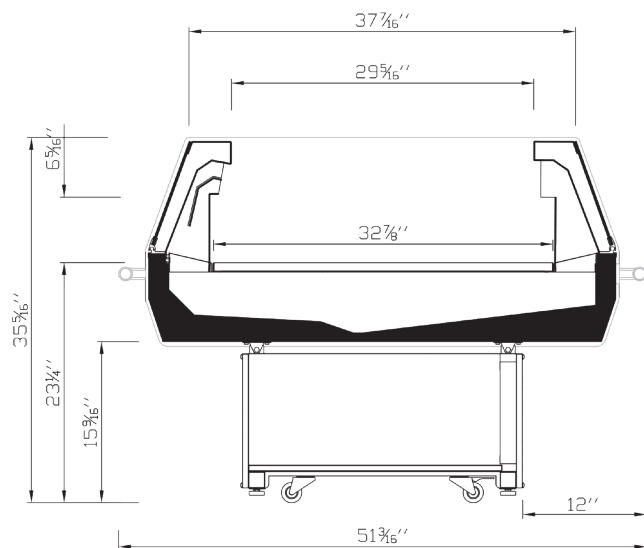
- CFC-Free polyurethane insulation, entire cabinet structure is foamed-in place using a high density polyurethane insulation.

Electrical and electronic controllers:

- NTC temperature probes encapsulated and sealed.
- Effective way to visualize temperature

Refrigeration:

- Digital temperature controller with automatic defrost system.



COMMERCIAL SECTION

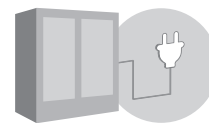
MÁLAGA SERIES

Refrigerated display counter for fish
VML



PLUG IN

FOR



AVAILABLE MODELS

VML12

VML15

VML18

ELECTRICAL DATA: 115 V / 1Ph / 60 Hz

REFRIGERANT CONNECTION: R-290

PRODUCT TEMP: 30°F / 34°F

GENERAL DATA

MODEL	VML12	VML15	VML18
LENGTH (in)	49 1/5	61 1/2	73 5/6
TOTAL VOLUME (ft³)	4	8 3/8	12 5/7
TDA (ft²)	8 1/2	10 2/3	12 4/5

GENERAL DATA

MEASURE (in)	35 7/16 x 51 13/16 x **L (in)
SHELVES (in)	—
N° SHELVES	—
EXPOSITION DECK (in)	—
SIDE PANEL THICKNESS (in)	—

STANDAR FEATURES

Exterior:

- AISI 304 stainless steel exterior.
- AISI 304 Stainless Steel Worktop.
- Tempered curved glass.

Interior:

- AISI 304 stainless steel interior.
- Stainless Steel perforated removable panels.
- Enameled steel bench.

Insulation:

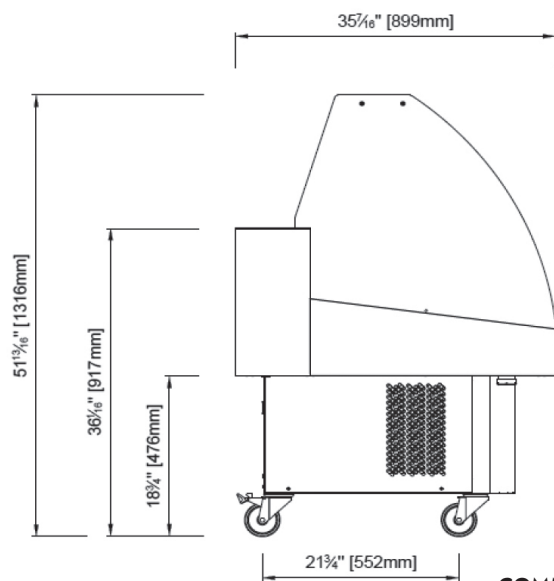
- CFC-Free polyurethane insulation, entire cabinet structure is foamed-in place using a high density polyurethane insulation.

Electrical and electronic controllers:

- NTC temperature probes encapsulated and sealed.
- Temperature and defrosting regulated by a digital controller.

Refrigeration:

- Evaporators treated with anticorrosion polyester epoxy.
- Manual defrosting.



COMMERCIAL SECTION