

MODEL: **IMD-EVV23R1G**  
**IMD-EVV49R2G**

## Wine cellars Serie Vintage



### GENERAL FEATURES

*Elevate your wine experience with our meticulously designer refrigerators. Precise temperature control for red, white, rosé, and brut wines. Protect your collection with UV-resistant glass or solid doors.*

- ✓ **Doors.** Self-closing door system features a permanent pressure mechanism, ensuring a secure closure every time. Additionally, a convenient 'stay open' feature engages when the door remains open at 95 degrees or beyond. Our doors also include triple chamber door gaskets that are easy to remove and snap in, ensuring an effective seal.
- ✓ **Control System.** Our temperature management system offers unparalleled precision, allowing for highly accurate temperature settings. With greater flexibility in adjusting temperature ranges, our system can be tailored to meet the unique needs of each end user. This ensures optimal performance and maximum satisfaction with every use.
- ✓ **Lighting.** LED lighting in the canopy and cabinet sides reduces the energy consumption by 80% to 90% compared to a traditional bulb, better light quality.
- ✓ **100% Tested.** All condenser units are 100% tested, in helium chambers for refrigerant leak detections.
- ✓ **Certified.** Audited and Certified by INTERTEK for compliance with UL 471 and NSF 7.



Revision:02 Date: 02/07/2024 IMD-EVV\_RG

ETL LISTED TO UL471 STANDARD AND SANITATION CLASSIFIED TO NSF7 – WE RESERVE THE RIGHT TO CHANGE SPECIFICATIONS WITHOUT PRIOR NOTICE

**MODEL: IMD-EVV23R1G**  
**IMD-EVV49R2G**

## Wine Coolers Single & Dual Temperature

### STANDARD FEATURES

- **Exterior**
  - 100% Pine wood exterior (Top, Front, Sides).
- **Interior**
  - Pre-painted galvanized steel interior,
  - **LED lighting.**
- **Doors**
  - Wooden doors with double glass.
  - Easy removal triple chamber gaskets.
  - Full height door opening: 19-1/4" – 53" (489x1346 mm).
- **Insulation**
  - CFC- Free polyurethane insulation, entire cabinet structure is foamed-in using a high-density polyurethane insulation.
  - Low GWP & Zero ODP effect.
- **Shelving**
  - (5) wooden shelves, adjustable height and easy removal.
  - Dimensions WxD: 18-3/4" x 16-1/2" (477x420 mm).
- **Refrigeration**
  - Digital temperature controller with automatic defrost system,
  - Evaporative pan,
  - Evaporator coil coated with anti-corrosion material 100% Polyester.
  - Forced air refrigeration system,

**Refrigeration capacity:**  
**IMD-EVV23R1G** – 1512 Btu/h(14°F)/ 443 W(-10°C).  
**IMD-EVV49R2G** – 2120 Btu/h(14°F)/621 W(-10°C)
- **Electrical**
  - Cord and NEMA 5-15P plug.
  - Electrical connection is 115V / 1ph / 60 Hz.
  - 15 AMP breakers required.



### OPTIONAL FEATURES

- ✓ Decoration: cherry (standard), black and white (optional).
- ✓ Additional shelves.
- ✓ Electrical connection is 230 V / 1 ph / 50 Hz (Plug type varies).

- **ETL Listed to UL471 Standard and Sanitation classified to NSF7.**

Revision:02 Date: 02/07/2024 IMD-EVV23\_49\_RG

ETL LISTED TO UL471 STANDARD AND SANITATION CLASSIFIED TO NSF7 – WE RESERVE THE RIGHT TO CHANGE SPECIFICATIONS WITHOUT PRIOR NOTICE

**MODEL: IMD-EVV23R1G**  
**IMD-EVV49R2G**

**Wine Coolers Single & Dual Temperature**

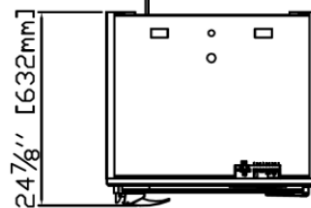
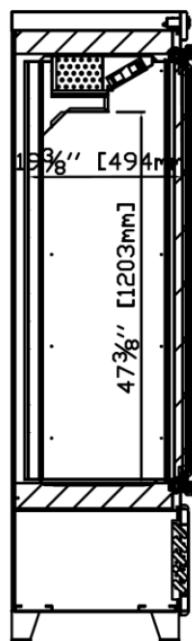
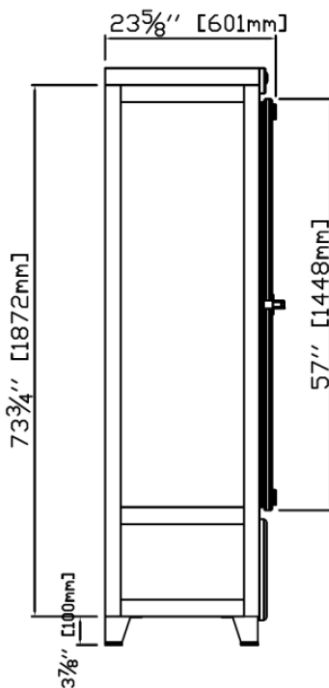
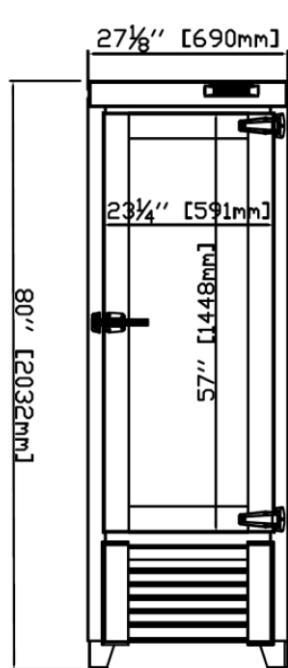
MODELS	Dimensions (inches) (mm)			Doors	Shelves	Ref.	Ref.Weight (Lbs.) (gr.)	Temperature Range (°F) (°C)	Cond. Unit (H.P)	Capacity (Cu.Ft.) (L)	Case Amps 115V	Net weight (Lbs.) (Kg.)
	W	D	H									
IMD-EVV23R1G	27-1/8 (690)	23-5/8 (601)	80 (2.032)	1	5	R290	0,24 (110)	39 °F/64 °F (+4°C/+18°C)	1/3	12,36 (350)	3,66	310 (140)
IMD-EVV49R2G	51-3/4 (1.314)	23-1/2 (596)	75-1/2 (1.918)	2	7+7	R290	0,26 (120)	39 °F/64 °F (+4°C/+18°C)	1/3+1/3	12,36 + 12,36 (350 + 350)	5,01	630 (286)
							0,26 (120)					

**PLAN VIEW**

**ELEVATION**

**RIGHT VIEW**

**PLANT VIEW**



**IMD-EVV23R1G**

Revision:02 Date: 02/07/2023 IMD-EVV\_RG

ETL LISTED TO UL471 STANDARD AND SANITATION CLASSIFIED TO NSF7 – WE RESERVE THE RIGHT TO CHANGE SPECIFICATIONS WITHOUT PRIOR NOTICE

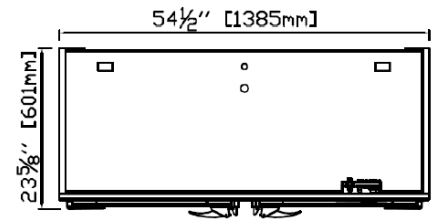
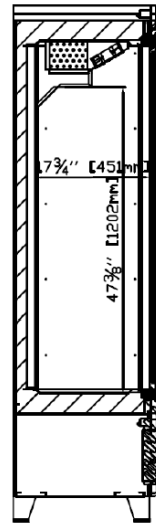
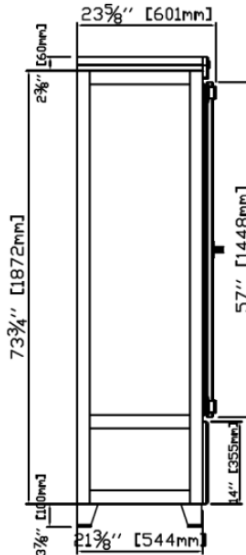
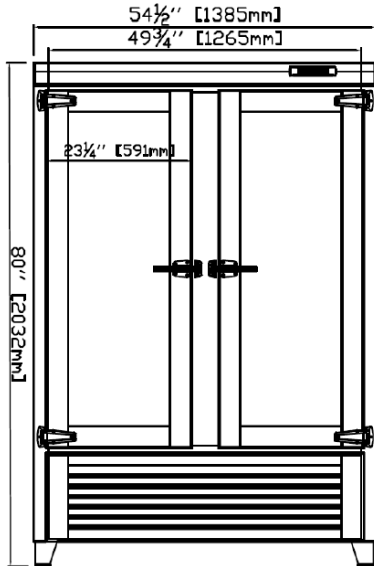
MODEL: **IMD-EVV23R1G**  
**IMD-EVV49R2G**

*Wine Coolers Single & Dual Temperature*

**ELEVATION**

**RIGHT VIEW**

**PLANT VIEW**



**IMD-EVV49R2G**

Revision:02 Date: 02/07/2023 IMD-EVV\_RG

ETL LISTED TO UL471 STANDARD AND SANITATION CLASSIFIED TO NSF7 - WE RESERVE THE RIGHT TO CHANGE SPECIFICATIONS WITHOUT PRIOR NOTICE