

MODELS:	VBC9R/S CP VBC12R/S CP	VBC15R/S CP VBC18R/S CP	VBC25R/S CP
---------	---------------------------	----------------------------	-------------

**Barcelona series – Ventilated with/without storage flat glass.**



VBC 12 RCP



VBC 12 SCP

**Strengths**

- ✓ **Combination of different cooling system modules: ventilated, half-static and static. Modules with or without cooled storage. Angles and counters to adapt the line to a space.**
- ✓ **Greater precision in temperature control. Easier to adjust the temperature range we want to achieve.**
- ✓ **All condenser units are tested 100%, in helium chambers to refrigerant leak detections.**
- ✓ **LED lighting incorporated, reducing energetic consumption between 80% and 90% respect to a traditional light bulb.**
- ✓ **Infrico is AENOR audited and certified by internationally recognized firm. ISO 9001:2015 (Quality); ISO 14001:2015 (Environmental); OSHAS 18001:2007 (Prevention and Worker Safety). Audited and Certified by INTERTEK for compliance with UL 471 and NSF 7.**

MODELS	Dimensiones (mm)			Sides thickness (mm)	Exposure surface (m <sup>2</sup> )	Nº Doors	Shelves	Cabinet volume (L)	Gross volume (L)	Temp. regime (°C)	Ref.	Net weight (Kg.)
	Length	Depth	Height									
VBC9R/S CP	938	1150	1290	30 + 30	0,52	1	1	131	1345	0°C/+6°C	R452	154
VBC12R/S CP	1250	1150	1290	30 + 30	0,69	2	1	175	1790	0°C/+6°C	R452	186
VBC15R/S CP	1562	1150	1290	30 + 30	0,87	2	1	219	2240	0°C/+6°C	R452	194
VBC18R/S CP	1875	1150	1290	30 + 30	1,04	3	1	263	2690	0°C/+6°C	R452	206
VBC25R/S CP	2500	1150	1290	30 + 30	1,39	4	1	350	3585	0°C/+6°C	R452	240

MODELS:	VBC9R/S CP VBC12R/S CP	VBC15R/S CP VBC18R/S CP	VBC25R/S CP	<b>Barcelona series – Ventilated with/without storage flat glass.</b>
---------	---------------------------	----------------------------	-------------	---

## STANDARD FEATURES

### ➤ Modular line

- Different cooling system modules can be combined using complete dividers.
- Designed for meat and precooked and packaged foods, charcuterie, milk products and sandwiches.

### ➤ Exterior

- Plastic coated steel exterior.
- AISI 304 stainless steel worktop.
- AISI 304 stainless steel exposure surface.
- Lacquered DM decoration.
- Folding secured curved glass.

### ➤ Interior

- Plastic coated steel interior.
- Enamelled steel base.
- LED lighted middle shelf and exposure surface.
- Storage door clearance of 425x255 mm.

### ➤ Insulation

- Insulation by free CFC's polyurethane, foam high-pressure injected with density 40 Kg/m<sup>3</sup>.
- Zero ODP and Low GWP.

### ➤ Refrigeration

- Temperature and defrost regulated by a digital controller.
- Automatic defrost.
- Ventilated condensation system.
- Forced evaporation system.
- Stainless steel evaporative tray with double vat, one for hot gas and another with electrical heater.
- Climatic class 4 (30°C, 55%RH).

### ➤ Electrical

- Electrical connection: 230 V / 1 ph / 50 Hz.



### OPTIONAL

- Sliding back doors.
- Night curtains.
- Heated glass.
- Range of decoration colours (consult).
- Electrical connection 230 V / 1 ph / 60 Hz.
- Electrical connection 115 V / 1 ph / 60 Hz.

MODELS	Dimensions palletizing (mm)			Pallet weight (Kg.)	Power (W)	Comp. (HP)	Cooling power (W at -10°C)	Consumption (kWh/24h)	Inten. (A)	Container 20'/40'/40'HC	Trailer
	Length	Depth	Height								
VBC9R/S CP	1100	1200	1500	190	755	3/8	676	10,6	4	10 / 20 / 20	24
VBC12R/S CP	1340	1200	1500	200	1015	5/8	1096	14,2	6	4 / 9 / 9	20
VBC15R/S CP	1720	1200	1500	240	1070	3/4	1315	15,0	6	4 / 9 / 9	15
VBC18R/S CP	2045	1200	1500	275	1310	1	1594	18,3	7	4 / 9 / 9	13
VBC25R/S CP	2660	1200	1500	300	1585	1 + 1/6	1755	22,2	9	2 / 4 / 4	10

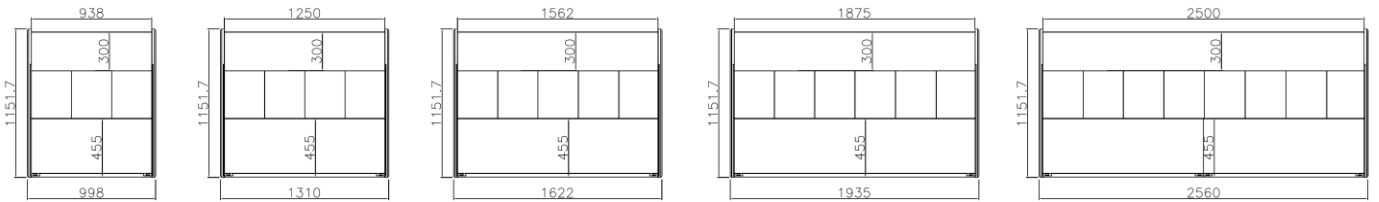
MODELS:	VBC9R/S CP VBC12R/S CP	VBC15R/S CP VBC18R/S CP	VBC25R/S CP	<b>Barcelona series – Ventilated with/without storage flat glass.</b>
---------	---------------------------	----------------------------	-------------	---

**GENERAL VIEW**

**FRONT VIEW**



**TOP VIEW**



VBC9 R/S CP

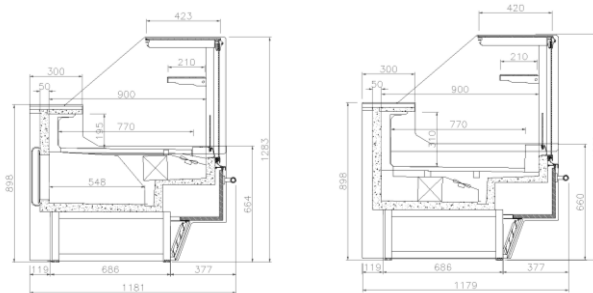
VBC12 R/S CP

VBC15 R/S CP

VBC18 R/S CP

VBC25 R/S CP

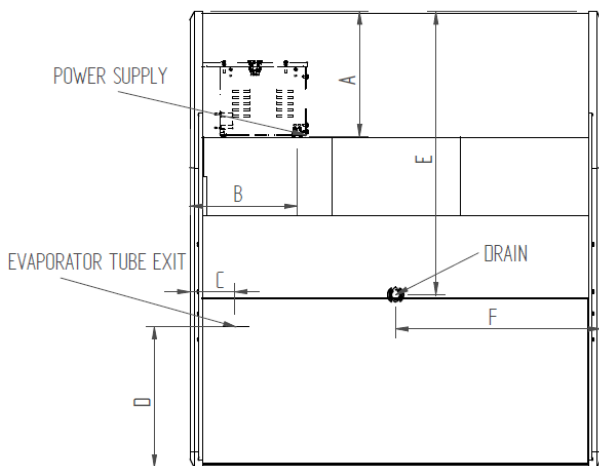
**SIDE VIEW**



VBC\_RCP

VBC\_SCP

**CONNECTIONS**



MODELS	A (mm)	B (mm)	C (mm)	D (mm)	E (mm)	F (mm)
VBC9R/S CP	303	260	108	341	687	500
VBC12R/S CP	303	260	108	341	687	625
VBC15R/S CP	303	260	108	341	687	781
VBC18R/S CP	303	260	108	341	687	938
VBC25R/S CP	303	260	108	341	687	1250